



MONTHLY MEMBERSHIP PROGRESS REPORT

District 3 SW

Results as of: 05/31/2018

GMT: JOE AL PICONE

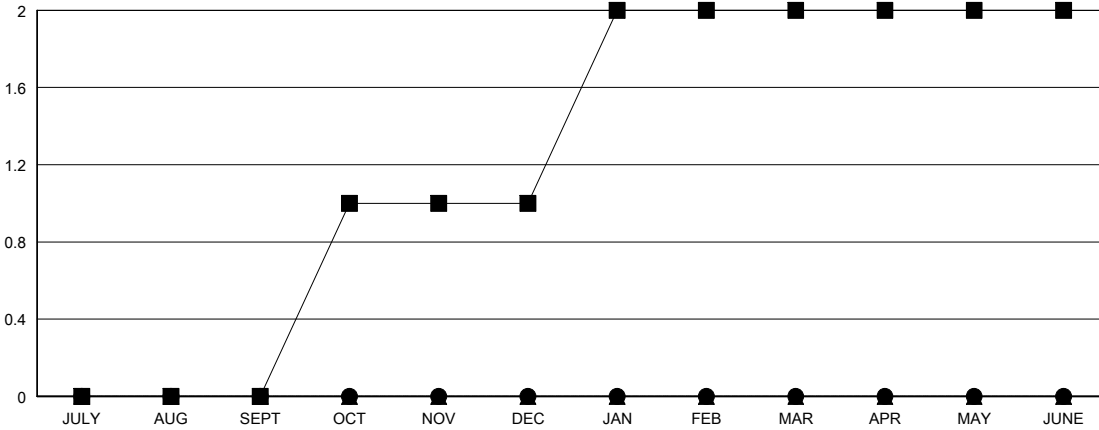
LOCATION OKLAHOMA

GMT CA

Clubs			
RESULTS FOR 2017-2018			
QUARTER	NEW CLUB GOAL	NEW CLUBS	DROPPED CLUBS
JULY/AUG/SEPT	0	0	1
OCT/NOV/DEC	1	0	0
JAN/FEB/MAR	1	0	0
APR/MAY/JUNE	0	0	0

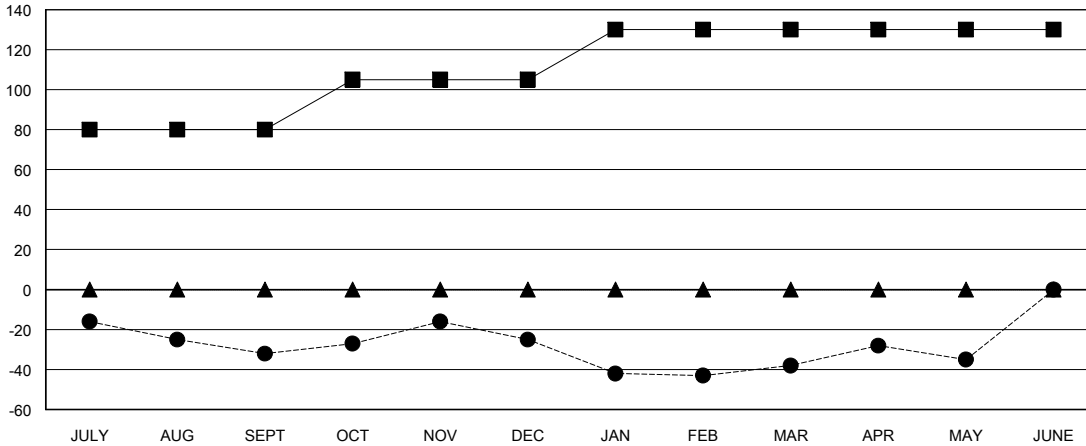
Members			
RESULTS FOR 2017-2018			
QUARTER	MEMBER GROWTH NET GOAL	MEMBER GROWTH ACTUAL	DROPPED MEMBERS ACTUAL (including transfers)
JULY/AUG/SEPT	80	30	57
OCT/NOV/DEC	25	43	31
JAN/FEB/MAR	25	65	72
APR/MAY/JUNE	0	40	34

GOALS AND ACTUAL NEW CLUBS CUMULATIVE



- - CURRENT YEAR GOALS FOR NEW CLUBS
- - CURRENT YEAR ACTUAL NEW CLUBS
- ▲ - LAST YEAR ACTUAL NEW CLUBS

GOALS AND ACTUAL MEMBERS CUMULATIVE



- - MEMBER GROWTH NET GOAL
- - MEMBER GROWTH ACTUAL
- ▲ - LAST YEAR MEMBERSHIP ACTUAL

DROPPED CLUBS: 1

40 CLUBS OF 62 ADDED 1 OR MORE NEW MEMBERS

GENDER DISTRIBUTION	
MALE	909 (63.57%)
FEMALE	521 (36.43%)
Women Percentage Fiscal Year Goal: 35%	

DROPPED MEMBERS	
DECEASED	17
CLUB CANCELLED	5
OTHER	172
TOTAL	194

[CLICK HERE FOR CUMULATIVE MEMBERSHIP DATA](#)

TOTAL FAMILY UNIT MEMBERS	172
FAMILY MEMBERS PAYING HALF DUES	87